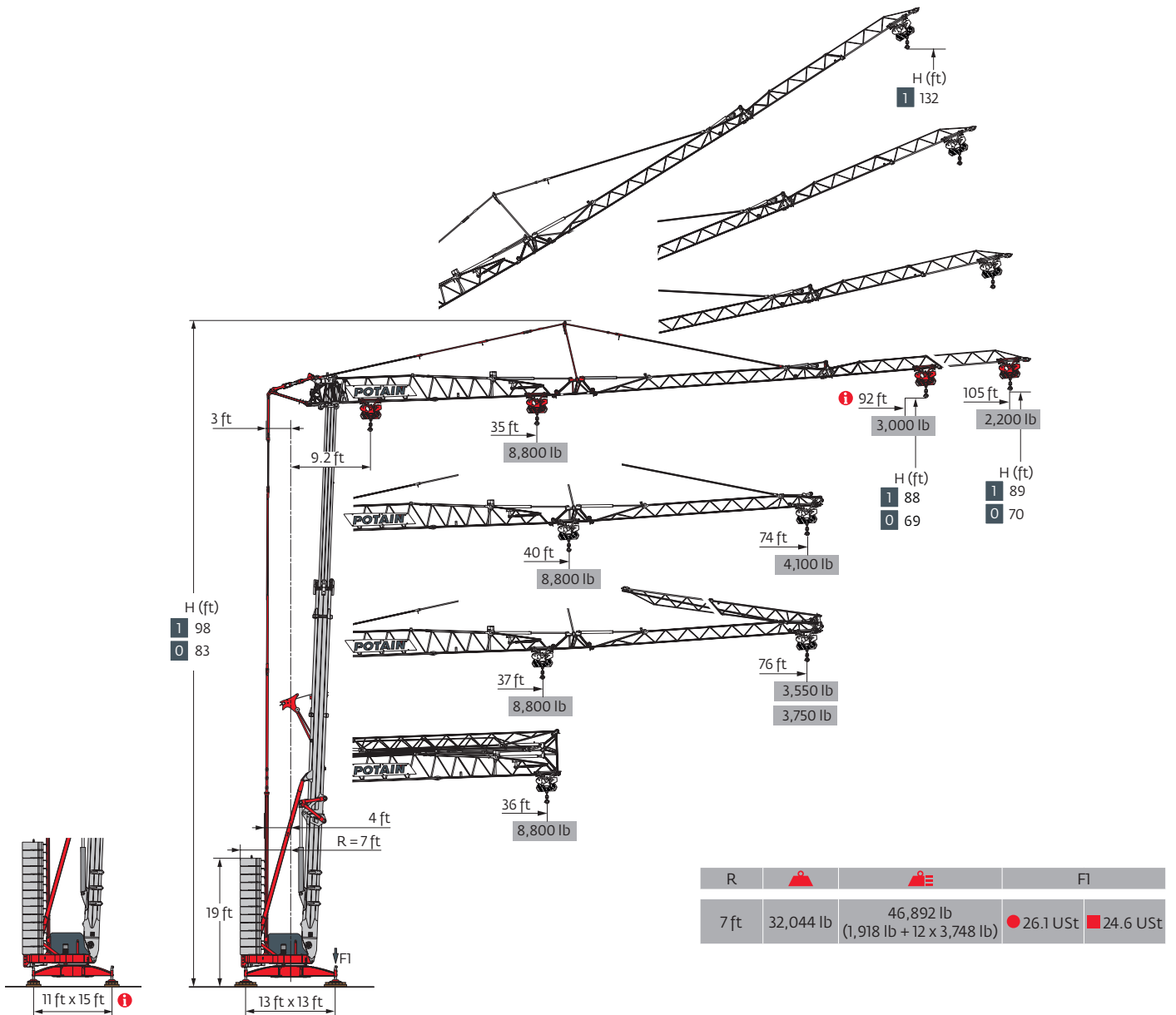
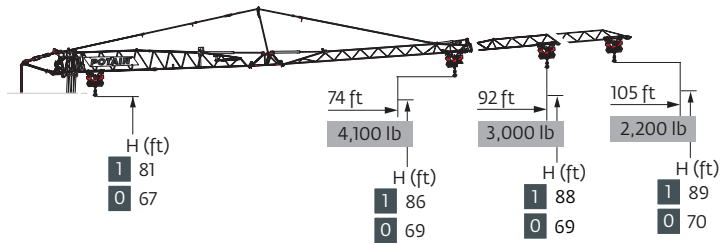
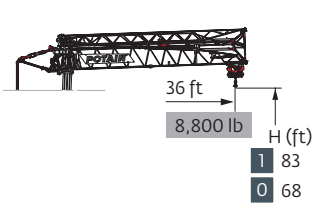


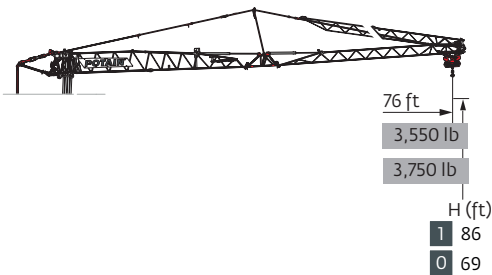
## Hup 32-27



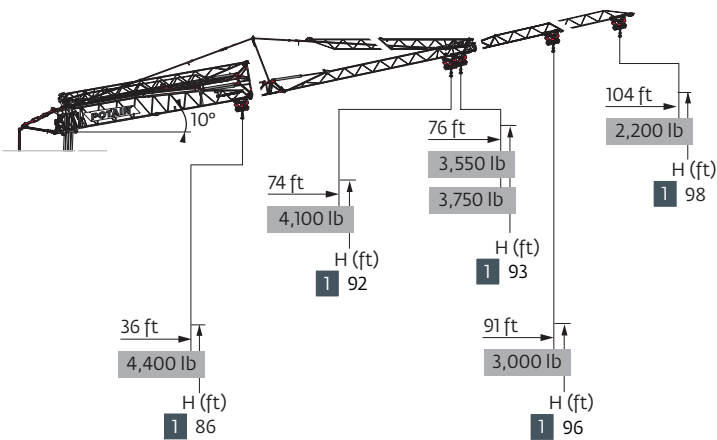
Load curves



|        |     |   |       |    |     |   |       |       |       |       |       |       |       |       |       |       |       |       |       |       |       |       |    |
|--------|-----|---|-------|----|-----|---|-------|-------|-------|-------|-------|-------|-------|-------|-------|-------|-------|-------|-------|-------|-------|-------|----|
| 105 ft | 9.2 | ▶ | 36    | ft | 9.2 | ▶ | 35    | 36    | 39    | 43    | 46    | 49    | 52    | 56    | 59    | 62    | 66    | 72    | 82    | 89    | 98    | 105   | ft |
| ▲▲▲▲   | ▼   |   | 8,800 | lb |     |   | 8,800 | 8,550 | 7,650 | 6,900 | 6,300 | 5,800 | 5,350 | 4,950 | 4,600 | 4,300 | 4,050 | 3,600 | 3,050 | 2,750 | 2,400 | 2,200 | lb |
| 92 ft  | 9.2 | ▶ | 36    | ft | 9.2 | ▶ | 38    | 39    | 43    | 46    | 49    | 52    | 56    | 59    | 62    | 66    | 72    | 82    | 89    | 92    | ft    |       |    |
| ▲▲▲▲   | ▼   |   | 8,800 | lb |     |   | 8,800 | 8,550 | 7,700 | 7,050 | 6,450 | 5,950 | 5,550 | 5,150 | 4,850 | 4,550 | 4,050 | 3,450 | 3,100 | 3,000 | lb    |       |    |
| 74 ft  | 9.2 | ▶ | 36    | ft | 9.2 | ▶ | 40    | 43    | 46    | 49    | 52    | 56    | 59    | 62    | 66    | 74    | ft    |       |       |       |       |       |    |
| ▲▲▲▲   | ▼   |   | 8,800 | lb |     |   | 8,800 | 8,100 | 7,400 | 6,800 | 6,250 | 5,800 | 5,450 | 5,100 | 4,750 | 4,100 | lb    |       |       |       |       |       |    |

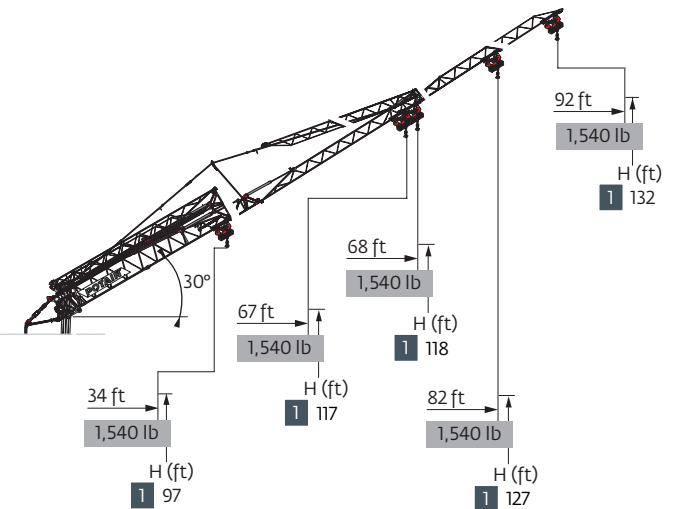
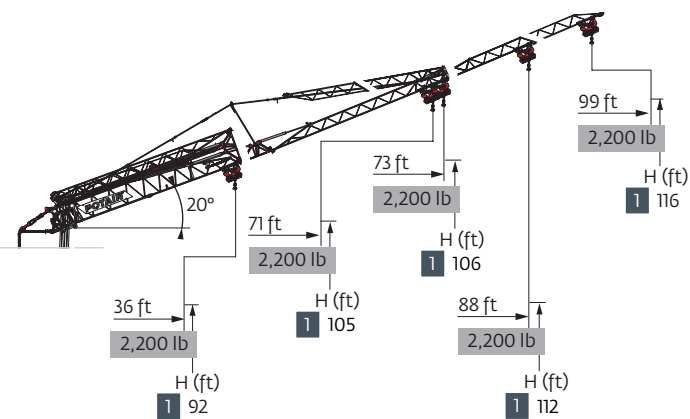


|        |     |   |       |       |       |       |       |       |       |       |       |       |       |       |    |
|--------|-----|---|-------|-------|-------|-------|-------|-------|-------|-------|-------|-------|-------|-------|----|
| 105 ft | 9.2 | ▶ | 37    | 39    | 43    | 46    | 49    | 52    | 56    | 59    | 62    | 66    | 72    | 76    | ft |
| ▲▲▲▲   | ▼   |   | 8,800 | 8,050 | 7,300 | 6,650 | 6,100 | 5,650 | 5,250 | 4,850 | 4,550 | 4,250 | 3,800 | 3,550 | lb |
| 92 ft  | 9.2 | ▶ | 38    | 39    | 43    | 46    | 49    | 52    | 56    | 59    | 62    | 66    | 72    | 76    | ft |
| ▲▲▲▲   | ▼   |   | 8,800 | 8,500 | 7,700 | 7,050 | 6,450 | 5,950 | 5,550 | 5,150 | 4,850 | 4,550 | 4,050 | 3,750 | lb |









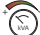
|        |     |   |       |       |       |       |       |       |       |       |    |
|--------|-----|---|-------|-------|-------|-------|-------|-------|-------|-------|----|
| 105 ft | 9.2 | ▶ | 60    | 62    | 66    | 72    | 82    | 89    | 98    | 104   | ft |
| ▲▲▲▲   | ▼   |   | 4,400 | 4,250 | 4,000 | 3,550 | 3,000 | 2,700 | 2,350 | 2,200 | lb |
| 92 ft  | 9.2 | ▶ | 66    | 72    | 79    | 91    | ft    |       |       |       |    |
| ▲▲▲▲   | ▼   |   | 4,400 | 3,950 | 3,550 | 3,000 | lb    |       |       |       |    |
| 74 ft  | 9.2 | ▶ | 69    | 72    | 74    | ft    |       |       |       |       |    |
| ▲▲▲▲   | ▼   |   | 4,400 | 4,200 | 4,100 | lb    |       |       |       |       |    |

|              |     |   |       |       |       |       |    |
|--------------|-----|---|-------|-------|-------|-------|----|
| 105 ft       | 9.2 | ▶ | 63    | 66    | 72    | 76    | ft |
| ▲▲▲▲         | ▼   |   | 4,400 | 4,250 | 3,750 | 3,550 | lb |
| 92 ft        | 9.2 | ▶ | 66    | 72    | 76    | ft    |    |
| ▲▲▲▲         | ▼   |   | 4,400 | 4,000 | 3,750 | lb    |    |
| 105-92-74 ft | 9.2 | ▶ | 36    | ft    |       |       |    |
| ▲▲▲▲         | ▼   |   | 4,400 | lb    |       |       |    |

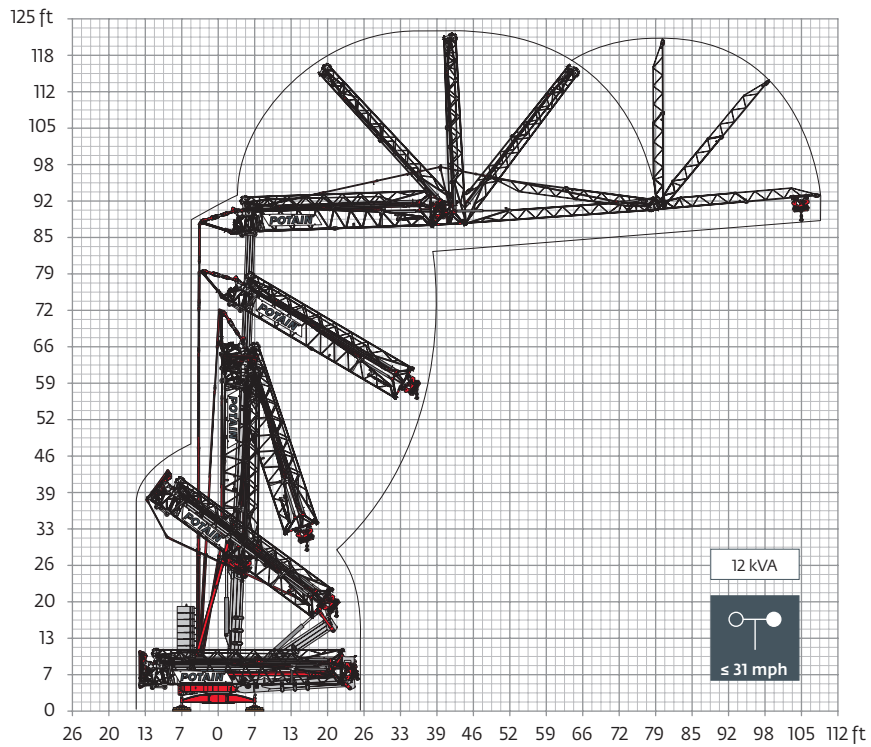


Mechanisms

| 480 V - 60 Hz   |            |     |  |       |       |       |       | hp | kW  |
|---|------------|-----|---|-------|-------|-------|-------|----|-----|
|  | 18 HPL™ 10 | fpm | 6.9   | 62    | 118   | 190   | 213   | 18 | 13  |
|   |            | lb  | 8,800   | 8,800 | 4,400 | 2,200 | 1,100 |    |     |
|  | 3 DVF 5    | fpm | 3 → 148 (0 → 2,200 lb)<br>3 → 135 (2,200 lb → 8,800 lb)                           |       |       |       |       | 3  | 2.2 |
|  | HPS 141    | rpm | 0 → 0.9   |       |       |       |       | 5  | 3.7 |

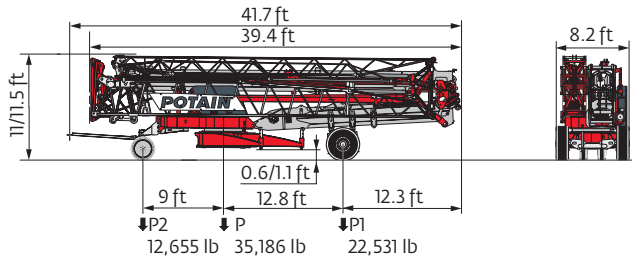
|  IEC 60204-32 |  |  |
|--|---|---|
| 480 V (+6% -10%) 60 Hz   | 19 → 13 kVA   |   |

Erection

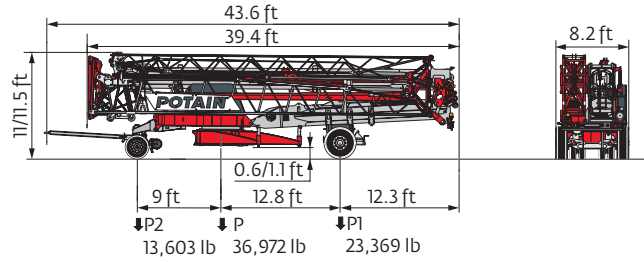


Transport

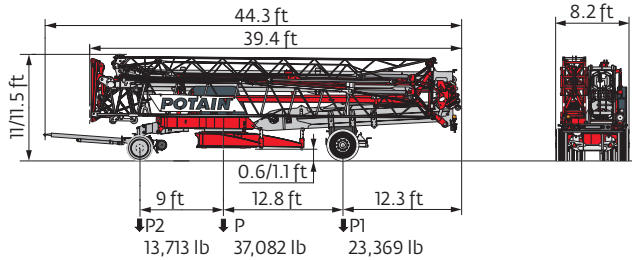
DS62/S120 - 6 mph



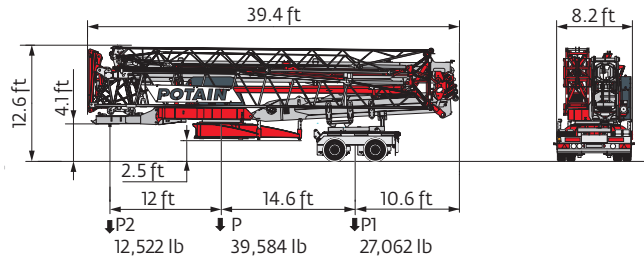
DJ105A/S125A - 15.5 mph



DJ126MA/S125A - 15.5 mph



North America Highway Axle



Container 40' Open Top High Cube

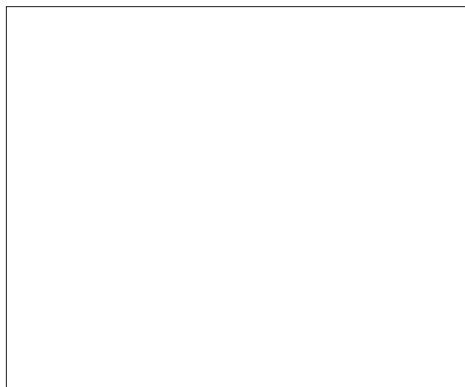


The reactions meet the EN 14439 and ASCE 7-10 specifications for "out of service" wind conditions, provided the illustrated wind speed matches required design wind speed for the location of the tower crane. The "out of service" design wind speed was determined in accordance with ASCE 7-10, Figure 26.5-1A. The wind velocity, used for this configuration was 98 mph (158 kph), which represents a nominal design 3-second wind gust at 33 ft (10 m) above ground for Exposure B category. A factor of 0.85 was applied to the 700-year ultimate design wind speed of 115 mph (185 kph), per ASCE 37-02, with the assumption that this crane is considered a temporary structure used during a construction period of 2 years or less.

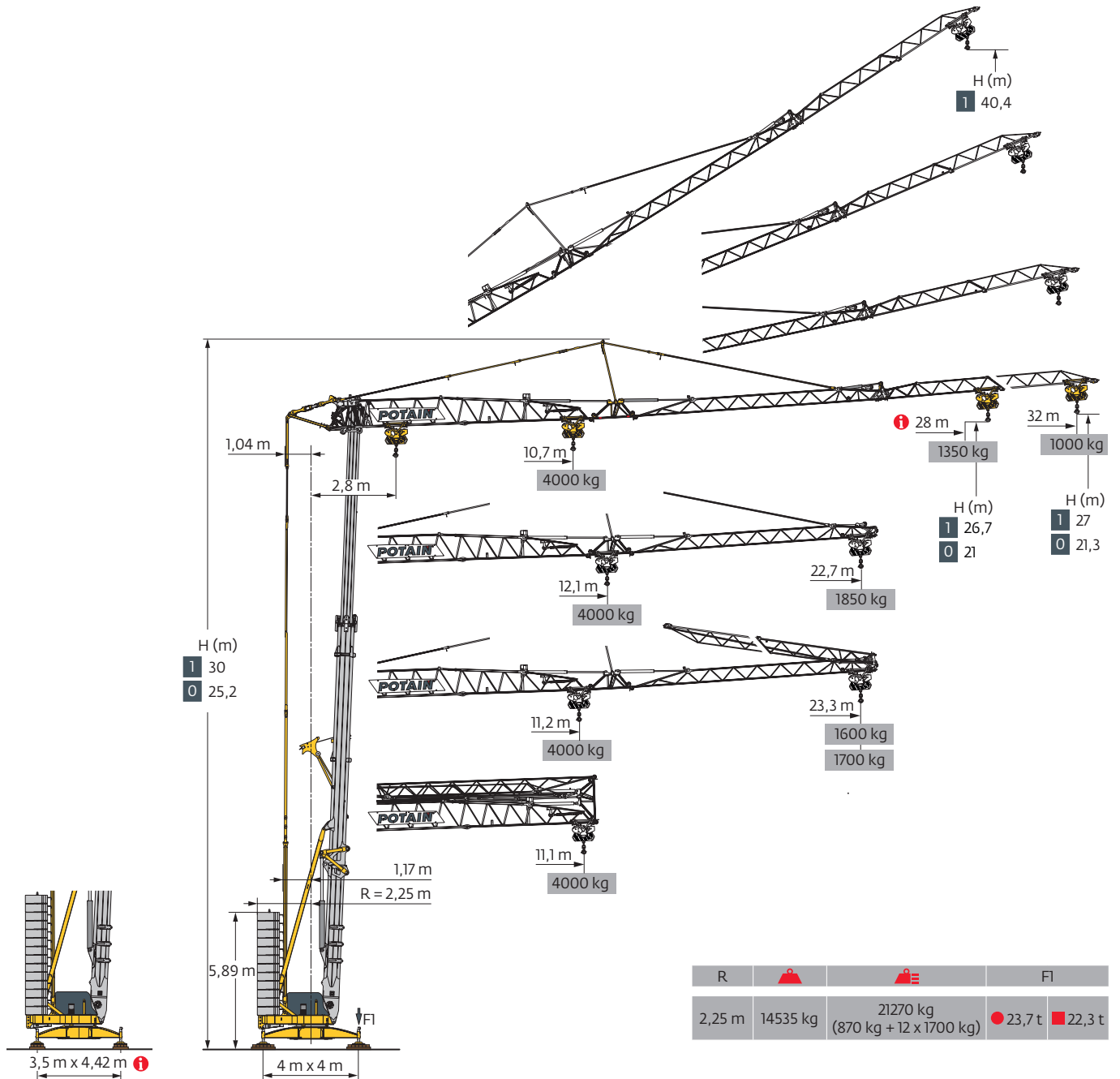
- R Rear slewing radius
- i Consult us
- Reactions in service
- Reactions out of service
- ▲ Weight without load, without ballast, without transport axles, with max. jib and standard height
- ▲ Total ballast weight
- Standard equipment
- Options
- Hoisting
- Trolleying
- Slewing
- kVA Required power

Power Control Function: winch speeds adapted to the available power

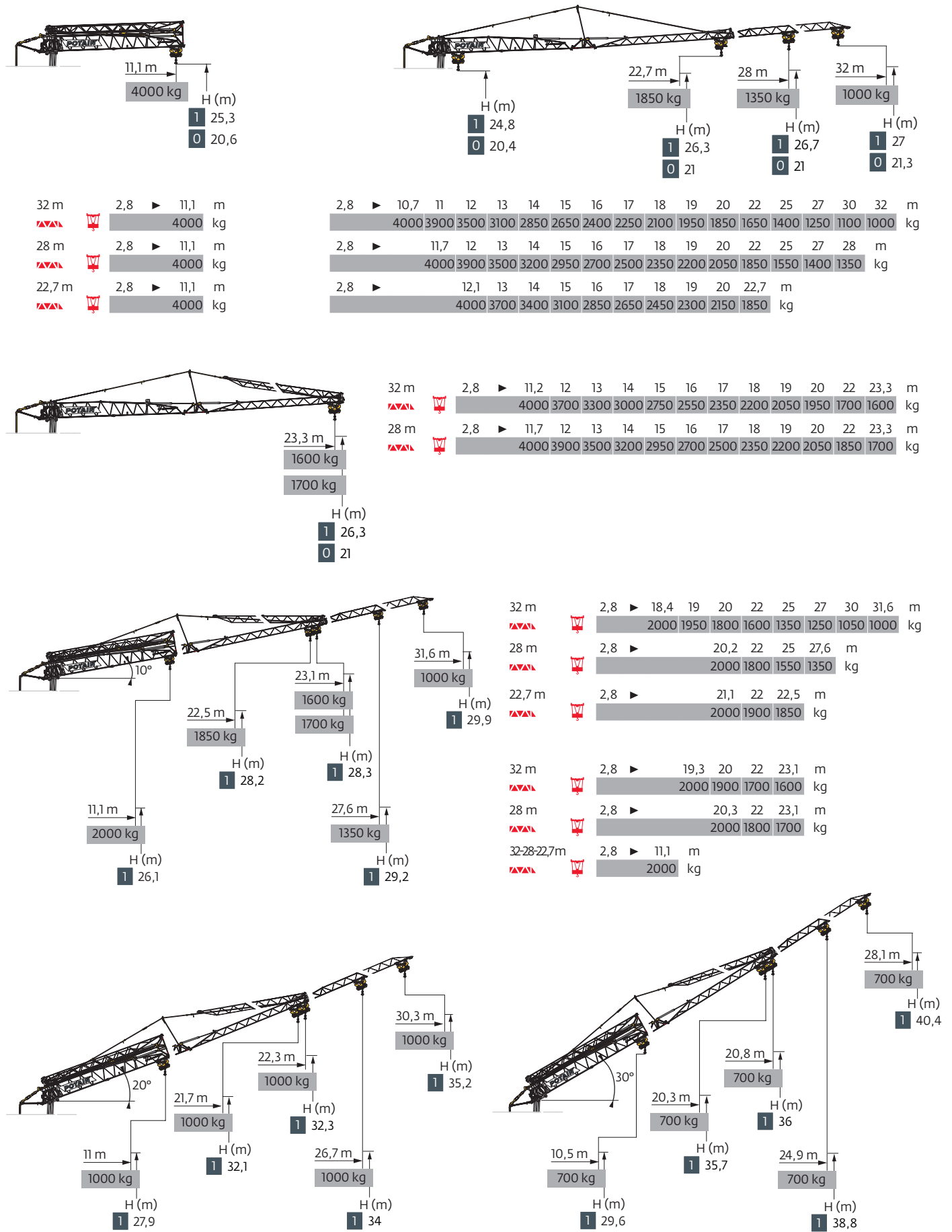
Hook heights given with plated pulley block  
 This commercial document is not legally binding  
 For any technical information, please refer to the corresponding instructions







## Hup 32-27







Courbes de charges / Lastkurven / Load curves / Curvas de cargas / Curve di carico  
 Curvas de carga / Кривые нагрузок

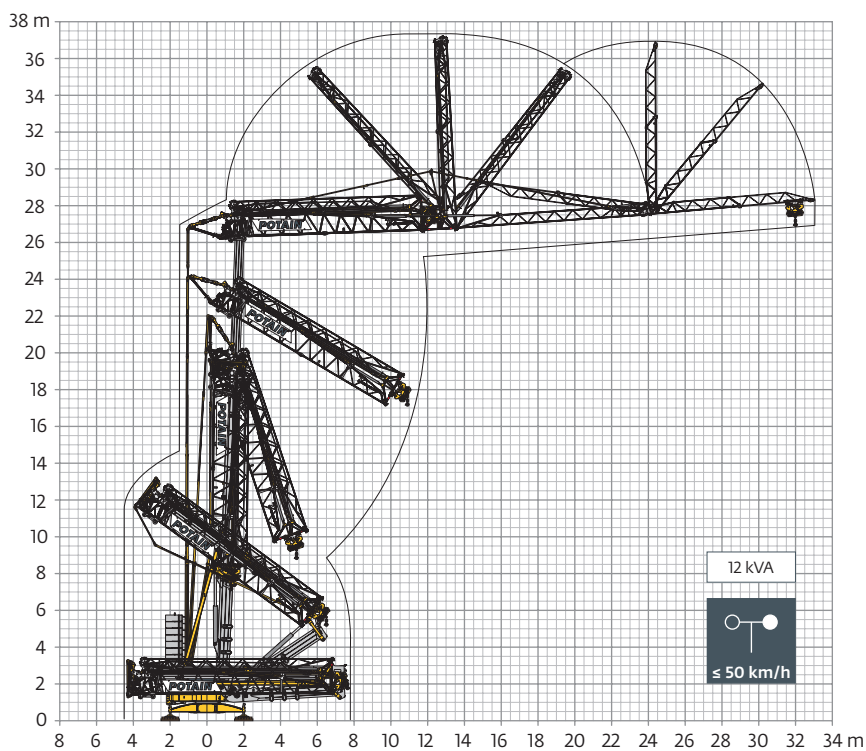


Mécanismes / Triebwerke / Mechanisms / Mecanismos / Meccanismi  
 Mecanismos / Механизмы

| 400 V - 50 Hz<br>480 V - 60 Hz  |                   |                        |  |      |      |      |     | ch - PS<br>hp | kW  |
|---|-------------------|------------------------|---|------|------|------|-----|---------------|-----|
|  | <b>18 HPL™ 10</b> | m/min                  | 2,1   | 19   | 36   | 58   | 65  | 18            | 13  |
|   |                   | kg                     | 4000  | 4000 | 2000 | 1000 | 500 |               |     |
|  | <b>3 DVF 5</b>    | m/min                  | 1 → 45 (0 → 1000 kg)<br>1 → 41 (1000 → 4000 kg)                                   |      |      |      |     | 3             | 2,2 |
|  | <b>HPS 141</b>    | tr/min<br>U/min<br>rpm | 0 → 0,9   |      |      |      |     | 5             | 3,7 |

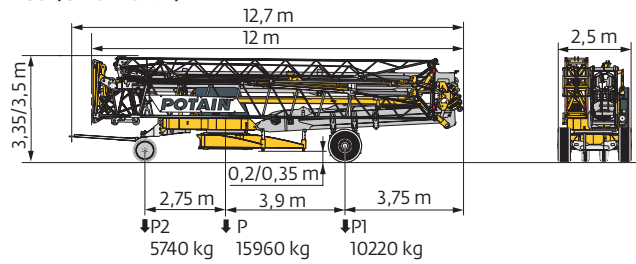
|  IEC 60204-32 |  kVA |  |
|--|---|---|
| 400 V (+10% -10%) 50 Hz<br>480 V (+6% -10%) 60 Hz  | 19 → 13 kVA   |  |

Montage / Montage / Erection / Montaje / Montaggio  
 Montagem / Монтаж

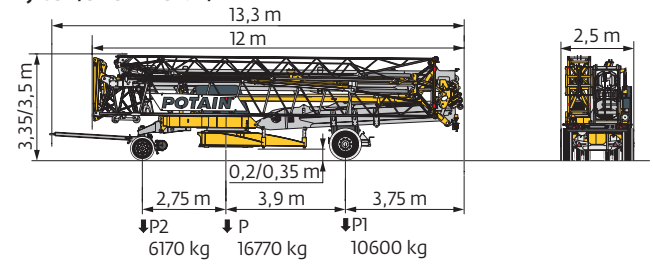


Transport / Transport / Transport / Transporte / Trasporto  
Transporte / Транспортировка

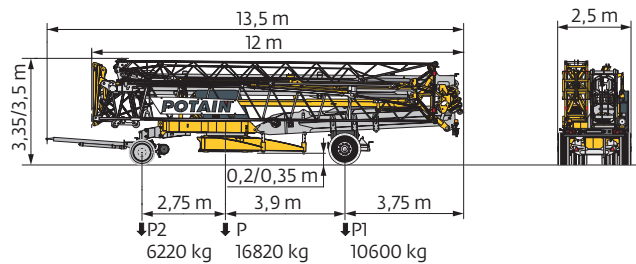
DS62/S120 - 10 km/h



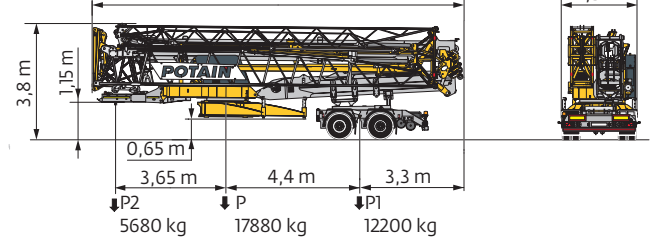
DJ105A/S125A - 25 km/h



DJ126MA/S125A - 25 km/h



SL122/J125M - 80 km/h (EBS)



Conteneur 40' Open Top High Cube / Container 40' Open Top High Cube / Container 40' Open Top High Cube / Contenedor 40' Open Top High Cube / Container 40' Open Top High Cube / Contentor 40' Open Top High Cube / 40-футовый контейнер повышенной вместимости Open Top High Cube



|            | FR   | DE   | EN  | ES  | IT  | PT   | RU   |
|------------|--|--|---|---|---|--|--|
| <b>R</b>   | Rayon de giration  | Schwenk radius   | Rear slewing radius   | Radio de giro   | Raggio di rotazione   | Raio de rotação  | Задний габарит   |
| <b>i</b>   | Nous consulter   | Auf Anfrage  | Consult us  | Consultarnos  | Consultateci  | Consultar-nos  | Проконсультируйтесь у нас  |
| <b>●</b>   | Réactions en service   | Reaktionskräfte in Betrieb   | Reactions in service  | Reacciones en servicio  | Reazioni in servizio  | Reacções em serviço  | Реакция при работе   |
| <b>■</b>   | Réactions hors service   | Reaktionskräfte außer Betrieb  | Reactions out of service  | Reacciones fuera de servicio  | Reazioni fuori servizio   | Reacções fora de serviço   | Реакция в покое  |
| <b>▲</b>   | Poids à vide, sans lest, sans trais de transport, avec flèche maxi. et hauteur standard. | Gewicht ohne Last, ohne Ballast, ohne Transportachsen, mit max. Auslager und Standardhöhe            | Weight without load, without ballast, without transport axes, with max. jib and standard height | Peso en vacío, sin lastre, sin trenes de transporte con flecha y altura estandar      | Peso a vuoto, senza zavorra, senza assali di trasporto, con braccio max e altezza standard. | Peso em vazio, sem lastro, sem eixos de transporte com lança máxima e altura standard. | Вес без груза, без балласта, без осей для транспортировки, с максимальным вылетом стрелы и стандартной высотой |
| <b>⚖</b>   | Poids total du lest  | Ballast-Gesamtgewicht  | Total ballast weight  | Peso total del lastre   | Peso totale della zavorra   | Peso total do lastro   | Общий вес балласта   |
| <b>□</b>   | Équipements standards  | Standardausrüstungen   | Standard equipment  | Equipamiento de serie   | Equipaggiamento standard  | Equipamento de série   | Стандартное оборудование   |
| <b>⊞</b>   | Équipements optionnels   | Sonderausrüstungen   | Options   | Equipamiento opcional   | Equipaggiamento in opzione  | Equipamento opcional   | Дополнительное оборудование (опция)  |
| <b>⬆</b>   | Levage   | Heben  | Hoisting  | Elevación   | Sollevarmento   | Elevação   | Подъем   |
| <b>⬇</b>   | Distribution   | Katzfahren   | Trolleying  | Distribución  | Distribuzione   | Distribuição   | Перемещение по стреле  |
| <b>⬅</b>   | Orientation  | Schwenken  | Slewing   | Orientación   | Rotazione   | Rotação  | Поворот  |
| <b>kVA</b> | Puissance requise  | Erforderliche Leistung   | Required power  | Potencia Necesaria  | Potenza richiesta   | Potência Necessária  | Потребляемая мощность  |
| <b>⌚</b>   | Fonction Power Control : vitesses treuils adaptées à la puissance disponible             | Funktion Power Control: Geschwindigkeiten der Triebwerke werden an die verfügbare Leistung angepasst | Power Control Function: winch speeds adapted to the available power                             | Función Power Control: marchas de los cabrestantes adaptadas a la potencia disponible | Funzione Power Control: velocità degli argani adattate alla potenza disponibile             | Função Power Control: velocidades de guincho adaptadas à potência disponível           | Функция контроля мощности Power Control: регулировка скорости лебедок в зависимости от доступной мощности      |
| <b>⚠</b>   | Hauteurs sous crochet données moufle plaquée   | Hakenhöhen werden mit plattiertem Haken angegeben  | Hook heights given with plated pulley block   | Altura bajo gancho con pasteca bloqueada  | Altezza sotto gancio con bozzello in contatto con carrello                                  | Altura ao gancho com o cadernal em contacto com o carrinho                             | Высота под крюком дана при условии, что крюковая подвеска соприкасается с кареткой                             |
|            | Document commercial non contractuel  | Unverbindliches Vertriebsdokument  | This commercial document is not legally binding   | Documento comercial no contractual  | Documento commerciale non vincolante  | Documento comercial não contratual   | Этот коммерческий документ не является юридически обязательным   |
|            | Pour toute information technique se référer à la notice correspondante                   | Für technische Informationen, siehe die entsprechenden Anweisungen                                   | For any technical information, please refer to the corresponding instructions                   | Para cualquier información técnica, ver la noticia correspondiente                    | Per tutte le informazioni tecniche fare riferimento al catalogo istruzioni                  | Para qualquer informação técnica complementar consultar as respectivas instruções      | Для получения технической информации, см. соответствующие инструкции   |

